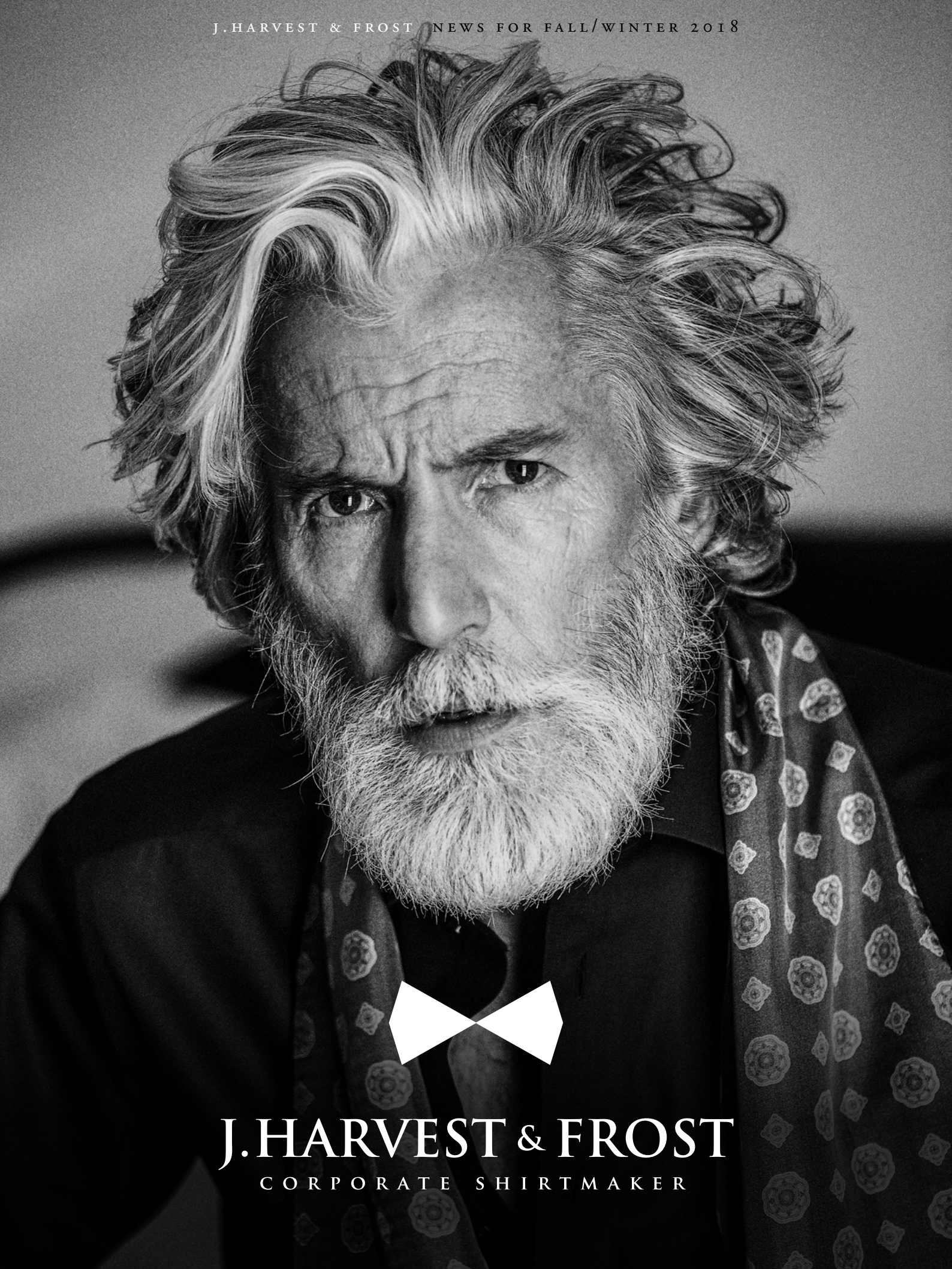
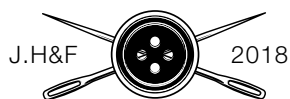


J. HARVEST & FROST NEWSFOR FALL/WINTER 2018



J. HARVEST & FROST

C O R P O R A T E S H I R T M A K E R



We're all about fine work wear – we live and breathe it. Sure, we make other things too, but if you're looking for that perfect garment, that oozes functionality and comfort, you're looking in the right direction. We are however not only about function, we like to look good too.

We create clothing for every aspect of life. Our garments are not limited to working hours or a fancy dinner party every once in a while. No. We want you to live your life fully, without having to change into something less official or more comfortable. So, just roll up your sleeves and get messy, no matter if you're coming straight from work. And hey, no need to feel sloppy – we told you, we like to look good too, right?

We are constantly seeking new performances and reinventions for our products. This gives us control of every stage in the production, resulting in the high quality fabrics and the perfect cut. Something you experience when wearing a piece of our collection.

NEWS FOR FALL

WWW.JHARVESTANDFROST.COM





REGULAR
2904801
S-4XL



SLIM FIT
2904802
S-XXL



WOMAN
2904803
XS-4XL

PURPLE BOW 48



A double 100's jacquard fabric, with a nice modern micro-pattern. Combine it with the full suit or a more relaxed look with jeans. Either way it will serve you well.

Our newly developed fabric is made with a mechanical stretch for better comfort.

The mechanical stretch is a new innovative way of giving comfort to a 100% natural long stapled, compact cotton fabric. It will give natural elasticity to the shirt of up to 12% stretch the weft way, and still keep our great NON-IRON performance.

This is innovative shirt-making at its best, and we enjoy taking part of it.

- PURPLE BOW LINE.
- MATCHING HANDKERCHIEF.
- BLUE TONED JAQUARD FABRIC, WOVEN IN A FINE MICRO-PATTERN.
- FABRIC QUALITY - 100% LONG STAPLED COMPACT COTTON- DOUBLE 100'S. WITH NEW AND INNOVATIVE MECHANICAL STRETCH.
- MACHINE WASHABLE. NON-IRON PATENTED ENVIRONMENTAL TREATMENT.
- SPLIT BACK YOKE ENSURES SMOOTH CONTOURED SHOULDERS, AND A GREATER RANGE OF MOTION.
- TAPED MAIN-SEAMS HELP THE SHIRT LOOK SHARP AND NEAT WASH AFTER WASH. NO WRINKLES.
- MODERN CUTAWAY COLLAR WITH A SOFT INTERLINING AND HIDDEN BUTTON DOWN.
- LONG SLEEVE. SOFT ROUND EDGE -CUFF, WITH EXTRA BUTTONHOLE FOR CUFF LINKS.
- PEARL-LIKE BUTTONS, FOR A LUXURIOUS LOOK.
- CURVED HEM.





REGULAR
2904901
S-4XL



SLIM FIT
2904902
S-XXL



WOMAN
2904903
XS-4XL

PURPLE BOW 49



A double 100's jacquard fabric, woven with white dots on navy background for a modern and sophisticated look. Combine it with the full suit or with jeans. Either way it will serve you well.

Our newly developed fabric is made with a mechanical stretch for better comfort. The mechanical stretch is a new innovative way of giving comfort to a 100% natural long stapled, compact cotton fabric. It will give natural elasticity to the shirt of up to 12% stretch the weft way, and still keep our great NON-IRON performance.

This is innovative shirt-making at its best, and we enjoy taking part of it.

- PURPLE BOW LINE.
- MATCHING HANDKERCHIEF
- NAVY JACQUARD FABRIC, WOVEN WITH WHITE MICRO DOTS
- FABRIC QUALITY - 100% LONG STAPLED COMPACT COTTON- DOUBLE 100'S. WITH NEW AND INNOVATIVE MECHANICAL STRETCH
- MACHINE WASHABLE. NON-IRON PATENTED ENVIRONMENTAL TREATMENT.
- SPLIT BACK YOKE ENSURES SMOOTH CONTOURED SHOULDERS, AND A GREATER RANGE OF MOTION

- TAPED MAIN-SEAMS HELP THE SHIRT LOOK SHARP AND NEAT WASH AFTER WASH. NO WRINKLES
- MODERN CUTAWAY COLLAR WITH A SOFT INTERLINING AND HIDDEN BUTTON DOWN.
- LONG SLEEVE. SOFT ROUND EDGE -CUFF, WITH EXTRA BUTTONHOLE FOR CUFF LINKS
- PEARL-LIKE BUTTONS, FOR A LUXURIOUS LOOK
- CURVED HEM.

J. HARVEST & FROST
CORPORATE SHIRTMAKER

SLIM FIT



REGULAR
2914001
S-4XL



SLIM FIT
2914002
S-XXL



WOMAN
2914003
XS-4XL

PURPLE BOW 140



A fine striped skyblue light-weight double 100's jacquard fabric, woven with white dots for a modern and sophisticated look.

Combine it with the full suit or with jeans. Either way it will serve you well.

Our newly developed fabric is made with a mechanical stretch for better comfort. The mechanical stretch is a new innovative way of giving comfort to a 100% natural long stapled, compact cotton fabric. It will give natural elasticity to the shirt of up to 12% stretch the weft way, and still keep our great NON-IRON performance.

This is innovative shirt-making at its best, and we enjoy taking part of it.

- PURPLE BOW LINE.
- MATCHING HANDKERCHIEF.
- BLUE TONED JAQUARD FABRIC, WOVEN IN A FINE MICRO-PATTERN.
- FABRIC QUALITY - 100% LONG STAPLED COMPACT COTTON- DOUBLE 100'S. WITH NEW AND INNOVATIVE MECHANICAL STRETCH.
- MACHINE WASHABLE. NON-IRON PATENTED ENVIRONMENTAL TREATMENT.
- SPLIT BACK YOKE ENSURES SMOOTH CONTOURED SHOULDERS, AND A GREATER RANGE OF MOTION.
- TAPED MAIN-SEAMS HELP THE SHIRT LOOK SHARP AND NEAT WASH AFTER WASH. NO WRINKLES.
- MODERN CUTAWAY COLLAR WITH A SOFT INTERLINING AND HIDDEN BUTTON DOWN.
- LONG SLEEVE. SOFT ROUND EDGE -CUFF, WITH EXTRA BUTTONHOLE FOR CUFF LINKS.
- PEARL-LIKE BUTTONS, FOR A LUXURIOUS LOOK.
- CURVED HEM.



J. HARVEST & FROST

TECHNICAL PARKA



MAN
2990201
S-XXXX



WOMAN
2990203
XS-XXL

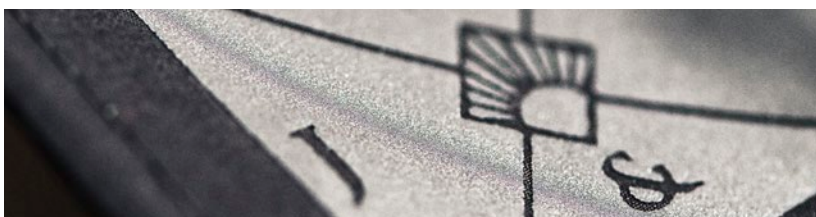
The popularity of our Technical City Coat, and the good test reports, made it necessary to make a hooded version. And so the parka was born.

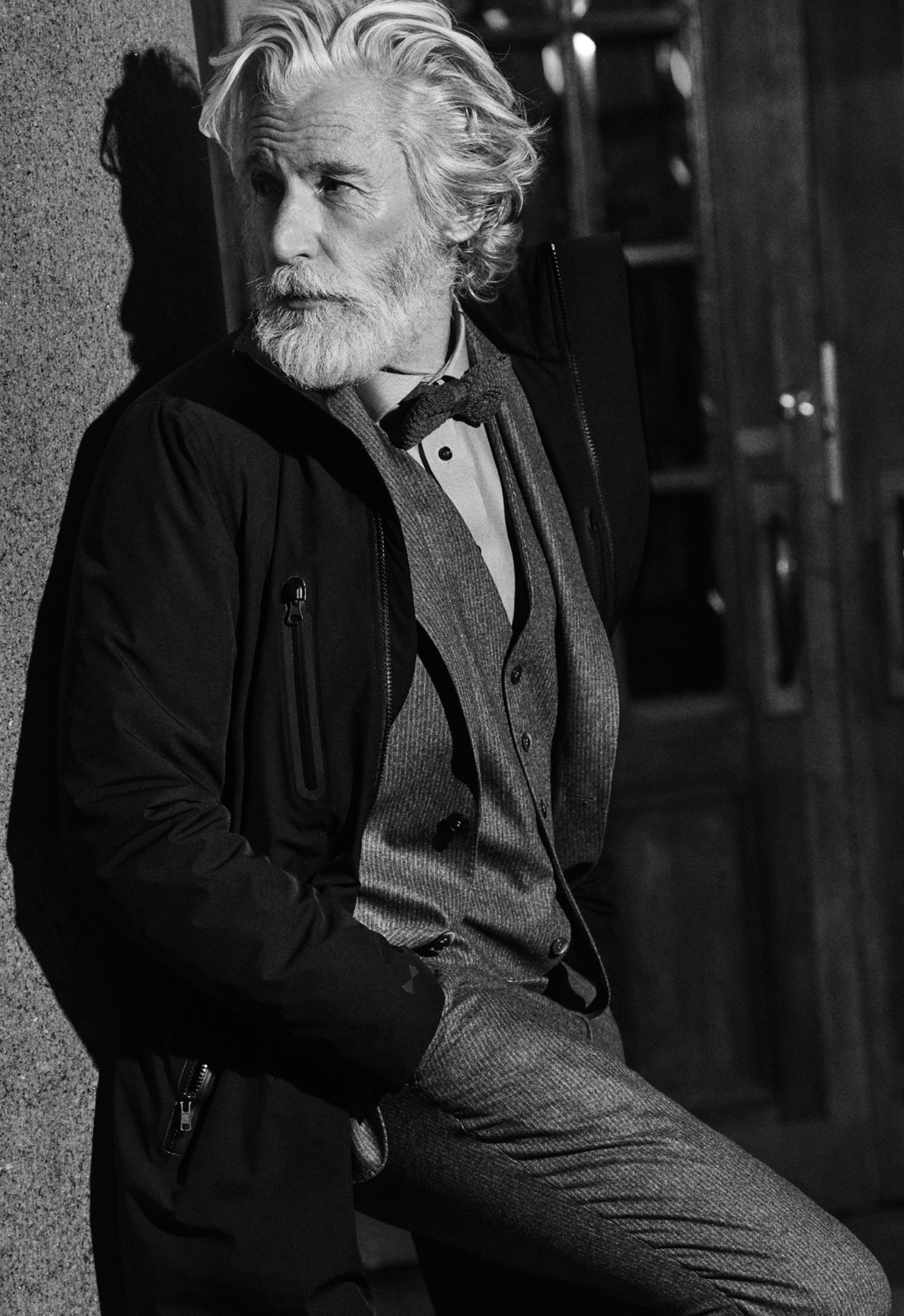
With the same technical performances as our city coat, but with the bold attitude of the urban parka. Outside front pockets, long sloping tail in the back and straight fit. Providing you with the right feeling of style, luxury and versatility in any given day or occasion. Any way you want to wear it.

The main technical features are 360 degree stretch, thin Primaloft-Silver insulation, water and wind proof. This highly technical, extreme lightweight parka is perfect for usage in the -15°C to +15°C temperature range.

- **BLACK COLOUR**
- **EXCEPTIONAL LIGHTWEIGHT 800G.**
- **OUTER SHELL: 87% POLYAMIDE, 13% ELASTANE.**
- **360 DEGREE STRETCH**
- **INSULATION (PRIMALOFT SILVER) 80 G.**
- **10 000 MM. WATER PROOFED.**
- **10 000 G. BREATHABILITY.**
- **DWR COATED WATER REPELLENT.**

- **TWO WAY YKK ZIPPER IN FRONT PLACKET.**
- **WATER PROOF YKK ZIPPERS AT CHEST POCKET**
- **REFLECTIVE VISIBILITY DETAILS AT FRONT, BACK AND HOOD FOR SAFETY.**
- **4 OUTSIDE POCKETS. FRONT: 2 BIG EXTERNAL POCKETS WITH FLAP COVER AND MAGNET LOCK, CHEST: 2 ZIPPED POCKETS**
- **MAGNET LOCK AT PLACKET + SIDE POCKETS.**





J. HARVEST & FROST

TECHNICAL CITY COAT



MAN
2990001
S-XXXX



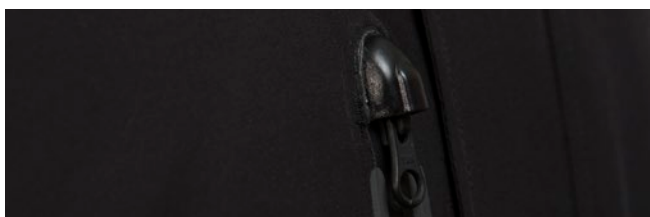
WOMAN
2990003
XS-XXL

This is an exceptional light, comfortable and nice fitted $\frac{3}{4}$ length city-jacket. Suits any situation or weather condition, either it is on the way to a business meeting, or a late night stroll in the park.

The main technical features are 360 degree stretch, thin Primaloft-Silver insulation, water and wind proof. This highly technical, extreme lightweight car-coat is perfect for usage in the -5°C To +15°C temperature range.

- **BLACK COLOR**
- **EXCEPTIONAL LIGHTWEIGHT 600G.**
- **OUTERSHELL - 87% POLYAMIDE, 13% ELASTANE.**
- **360 DEGREE STRETCH**
- **INSULATION- PRIMALOFT SILVER- 60 G.**
- **10 000 MM. WATER PROOFED.**
- **10 000 G. BREATHABILITY.**
- **DWR COATED WATER REPELLENCY.**

- **TWO WAY YKK ZIPPER IN FRONT PLACKET.**
- **WATER PROOF YKK ZIPPERS AT SIDES + CHEST POCKET.**
- **REFLECTIVE VISIBILITY DETAILS AT FRONT AND BACK FOR SAFETY.**
- **MAGNET LOCKING AT PLACKET, SPLIT & INSIDE POCKET.**





J.HARVEST & FROST

HYBRID WOOL COAT



MAN
2990101
S-XXXL



WOMAN
2990103
XS-XXL



We call it the Hybrid, as it is a mix of a typical A a classical wool coat and a zipped up technical jacket. We were inspired to create something different yet elegant, that had our name on it.

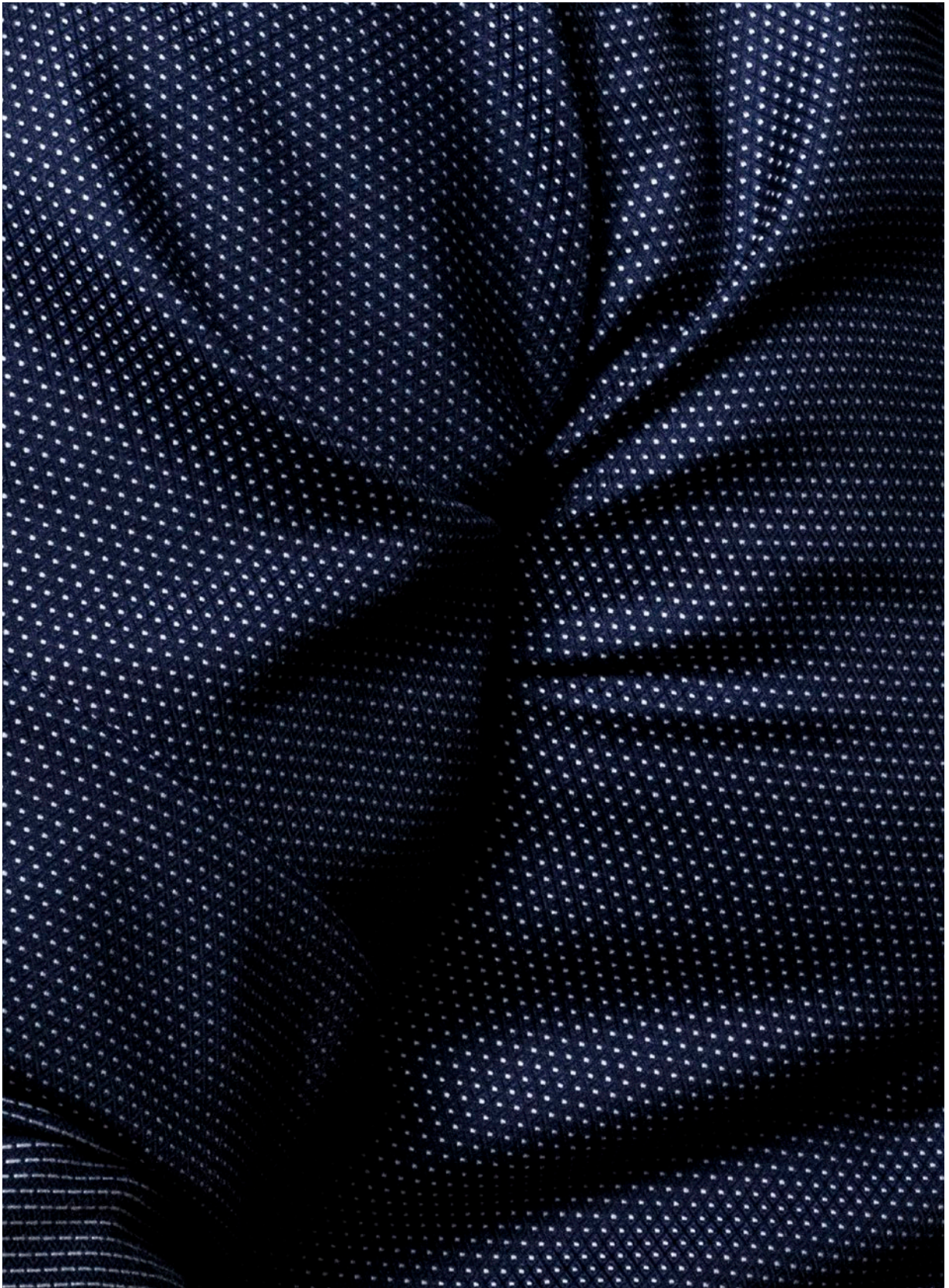
It has a modern stand collar, concealed front closure, chest pocket and impeccable stitching.

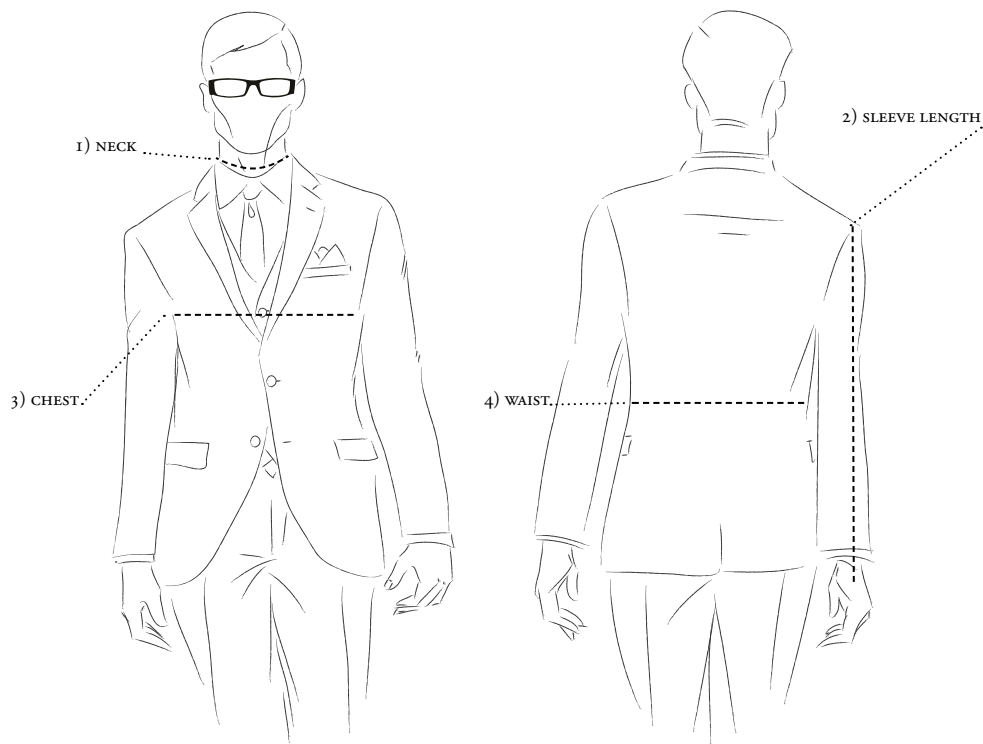
Well-fitted with a $\frac{3}{4}$ length, Perfect to be worn for work over a formal jacket but still a nice length for your everyday leisure adventures.

- 60%WOOL, 25%POLYESTER, 10%VISCOSE, 5%LYCRA.
- COLOR -BLACK
- HIDDEN TWO WAY YKK ZIPPER IN FRONT PLACKET.
- WATER PROOF YKK ZIPPERS IN SIDE+ CHEST POCKET.
- MAGNET CLOSING IN TOP COLLAR+ BACK SPLIT.
- REFLECTIVE VISIBILITY DETAILS AT FRONT AND BACK FOR SAFETY









HOW TO MEASURE YOUR BODY

1) NECK

Place the measuring tape around the neck at the height where the collar would normally rest. This will be just below your Adam's apple. Stand relaxed. Do not crane your neck out or squeeze your chin down. The tape should be resting lightly on the skin, not squeezing it. Hold one finger under the tape measure to ensure some room for comfort.

2) SLEEVE LENGTH

Place one end of the measuring tape at the tip of the shoulder, where you imagine the shoulder seam of the shirt will be. Let your arm hang down at side, and run the measure tape along with it. Measure to the center of the meaty part of your palm. If you don't have a partner, measure a shirt with sleeves that is the right length.

3) CHEST

Run the measuring tape around the fullest part of your chest, tight up under your armpits and over the shoulder blades. Let your arms hang down in a relaxed, natural pose. Do not puff out your chest or arch your back in any sort of pose that isn't natural or sustainable.

4) WAIST

Run the tape around the fullest part of the belly. This is usually around the level of the belly button. The measuring tape should be snug on the skin, but not squeezing in. Let your arms hang down, and stand in a relaxed, natural pose. Do not puff out your stomach or try holding it in.

SIZE MAP

S H I R T S																								
REGULAR	S	M	L	XL	XXL	XXXL	4XL	5XL	SLIM	S	M	L	XL	XXL	WOMAN	XXS	XS	S	M	L	XL	XXL	XXXL	4XL
SIZE	37/38	39/40	41/42	43/44	45/46	47/48	49/50	51/52	SIZE	37/38	39/40	41/42	43/44	45/46	SIZE	32	34	36	38	40	42	44	46	48
NECK	38	40	42	44	46	48	50	52	NECK	38	40	42	44	46	NECK	37	38	39	40	41	42.5	44	46	48
CHEST	106	112	118	124	130	138	146	154	CHEST	100	106	112	118	124	CHEST	86	90	94	98	102	106	110	116	122
WAIST	102	108	114	120	126	134	142	150	WAIST	92	98	104	110	116	WAIST	75	79	83	87	91	95	99	105	111
BACK C. LENGTH*	79	80.5	82	83.5	84	86	88	90	BACK C. LENGTH*	78	79.5	81	82.5	83	BACK C. LENGTH	63	64.5	66	67.5	69	70.5	72	74	76
SLEEVE-LENGTH	67	68	69	70	70	71	71	71	SLEEVE-LENGTH	67	68	69	70	70	SLEEVE-LENGTH	58.5	59.5	60.5	61.5	62.5	63	63.5	64	64
*1.5cm shorter B.C Length for Indigo Bow																								

CONVERTER

CENTIMETER NECK	38	40	42	44	46	48	50	52
SIZE	S	M	L	XL	XXL	XXXL	XXXXL	XXXXXL
SIZE	37/38	39/40	41/42	43/44	45/46	47/48	49/50	51/52
INCHES	15	15-3/4	16-1/2	17-1/2	18	19	19-3/4	20-1/2

B L A Z E R S

MAN	46	48	50	52	54	56	58	60	62
CHEST	104	108	112	116	120	124	130	138	146
MID WAIST	92	96	100	104	108.5	113	121	131	141
BACK C. LENGTH	71.5	73.5	75.5	77.5	79.5	80.5	81	81.5	82
SLEEVE LENGTH	63	64.5	65.5	66.5	67.5	68	68	68.5	68.5



WOMAN	32	34	36	38	40	42	44	46	48
CHEST	82	86	90	94	98	102	107	112	118
MID WAIST	73	77	81	85	89	93	98	103	109
BACK C. LENGTH	58	59	60	61	62	63	64	64.5	65
SLEEVE LENGTH	59	60	61	62	63	64	65	65.5	65.5





J. HARVEST & FROST
CORPORATE SHIRTMAKER